

HOW MUCH DO YOU KNOW BEFORE YOU THROW?

TEST YOUR RECYCLING KNOWLEDGE!



1

Which of these plastics can go in your tan recycling cart? (Select all that are correct)

- A. Stretchy plastic bags
- B. #5 plastic tubs
- C. Plastic bottles and jugs
- D. To-go food containers and "clamshells"

2

Can Styrofoam go in your tan recycling cart?

- A. Never, but it can be recycled elsewhere
- B. Sometimes, it depends on the type of Styrofoam
- C. Any type of Styrofoam is OK to put into the cart

3

True or False: Recyclables should be placed unbagged and loose in your tan cart.

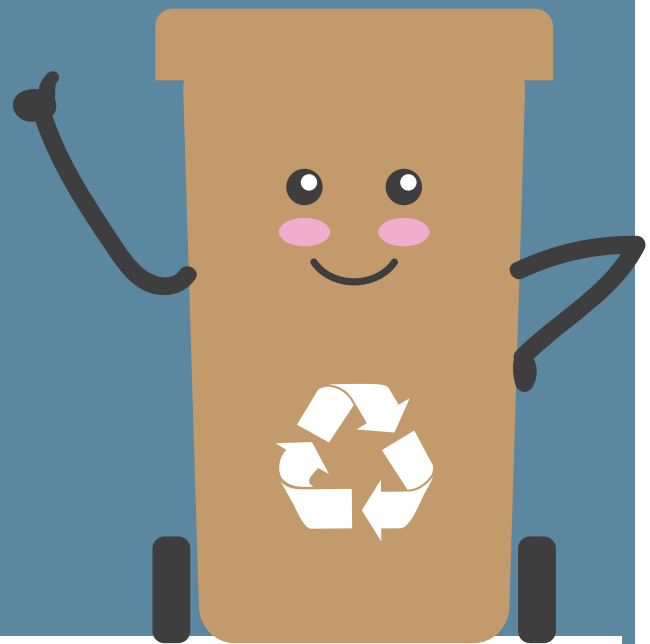
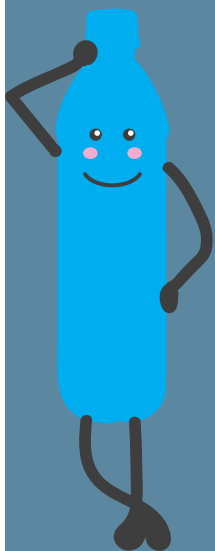
4

True or False: All recyclables should be empty, clean, and dry.

5

Which of the following can go into the gray yard debris cart? (Select all that are correct)

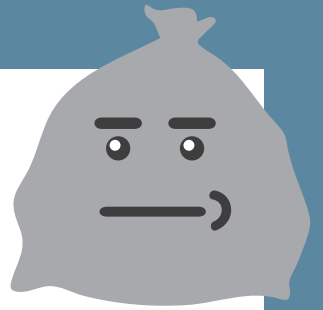
- A. Dairy food waste
- B. Meat food waste
- C. Paper bags contaminated with food
- D. Certain types of plastic bags
- E. Paper towels and napkins, soiled or not
- F. Papery to-go boxes



YOU COULD WIN \$25! Take our online recycling quiz, and you could win a \$25 gift card to First Alternative Co-op (firstalt.coop): tiny.cc/recyclequiz or circle your answers on this handout and mail your copy to: Corvallis Sustainability Coalition, PO Box 2310, Corvallis, OR 97339. Enter by 5/1/22.



ANSWERS

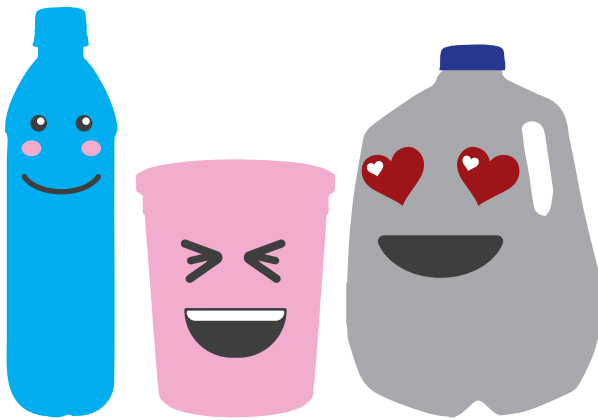


1 B, C

If you ever feel confused about plastics, come back to the rule of three. **There are just 3 shapes of plastics accepted in your tan cart: tubs marked #5, bottles, and jugs.** These are accepted because they are most easily turned into new products. If it's made of plastic and not one of these shapes, it does not go in.

Plastic bags should never go in our tan carts because they can get tangled in the machinery of sorting facilities, posing a threat to workers or damaging equipment. If you collect recycling in a plastic bag, be sure to empty the contents into your cart, and reuse or discard the bag.

Plastic to-go containers are not accepted because they are not consistently made of the same type of plastic, making it difficult and costly to convert them into something useful.



2 A

Styrofoam should never go into your tan cart, but there are a couple of options for us A+ recyclers. Take your Styrofoam blocks (no packing peanuts, please) to First Alternative Co-op's recycling center (1007 SE Third St., Corvallis; 541-753-3115 x7212; <https://firstalt.coop/recycling-center>; fee applies) or St. Vincent de Paul (2220 Pacific Blvd SE, Albany; 541-928-1559; up to one shopping cart full; free). If these options don't work for you, place Styrofoam in the trash.

3 TRUE

Recyclables are placed loose in our tan carts. If you collect them in a bag, be sure to empty the contents into your cart. A paper bag, if empty and clean, can go into the tan cart, but **plastic bags should never go in.** Employees who do the sorting won't open bags due to safety and time, so bagged recyclables will most likely be landfilled!

4 TRUE

All recyclable containers should be empty (contents poured out), **clean** (give it a little rinse), **and dry** (shake out the water). Leaving food or other material in containers can contaminate other recyclables, which then have to be thrown out. Food can also attract pests to recycling carts and facilities, introducing molds and odors into the workplaces of those who help process our recyclables.

5 A, B, C, E

That's right, **all food waste - even dairy and meat - can go into your yard debris cart, along with paper towels, napkins, and paper bags with food on them!** However, in Oregon we need to leave out to-go serving ware, even ones made of paper or labeled "compostable," so food and yard debris can be made into usable compost. It's also important to leave out all types of plastic bags, since they don't break down.

FUN FACT: Corvallis was the first city in Oregon to offer curbside pickup of food scraps for composting! In 2021 alone, Benton County composted **23.6 million pounds** of food waste and yard debris!

