

Are You Recycling... or Wish-Cycling?

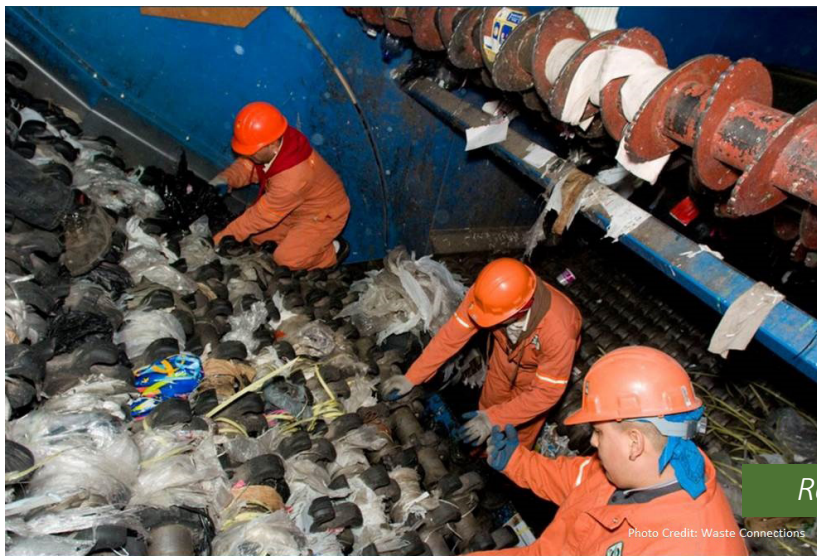
Sometimes our good intentions do more harm than good

WHAT'S WISH-CYCLING?

Too often people put items into their recycling cart, thinking, “No problem. If they’re not recyclable, they’ll just get sorted out.” This well-intentioned but harmful practice is called “wish-cycling.”

WHY IT'S SUCH A PROBLEM

- **Economic Viability:** Sorting out trash slows recycling operations, which costs more money, as does disposing of that trash.
- **Burden on Workers:** Working on a sorting line is hard enough without pulling off trash, handling dirty items, and untangling plastic bags from the equipment. Recycling right supports the workers who handle our material.
- **Environmental Impact:** Non-recyclables can *ruin* otherwise recyclable items, and including trash with our recycling results in additional environmentally-costly trips to the landfill.



The bottom line:
*Just because we
want something to
be recyclable
doesn't mean it is.*

***When in doubt,
throw it out!***

Read more on other side

Common Contaminants:

Leave them OUT of your cart!

<h2>Paper</h2>			
 <p>Food-soiled paper, frozen food boxes, wax & plastic coated cardboard</p>	 <p>Dirty paper, shredded paper, facial tissue & disposable diapers</p>	 <p>Ribbons & foil wrapping paper</p>	 <p>Hardback books (recycle pages). Donate to local senior center</p>
<h2>Plastic</h2>			
 <p>Plastic hangers</p>	 <p>Empty motor oil & antifreeze containers</p>	 <p>Candy wrappers & chip bags</p>	 <p>Styrofoam bakery & meat trays, take-out containers, clamshells, coffee/to-go cups</p>
 <p>Caps & lids</p>	 <p>Empty prescription vials</p>	 <p>Plastic plates & utensils</p>	
<h2>Glass</h2>		<h2>Metal</h2>	
 <p>Mirrors, window glass, ceramic dishes, incandescent & halogen bulbs (no fluorescent tubes/bulbs), canning jars, Pyrex</p>		 <p>Oil containers, dried-out paint containers, aerosol spray cans</p>	
		 <p>Caps, rings & lids</p>	 <p>Metal hangers* & sharp or greasy metal</p>
<p><i>*Tip: Donate hangers to a local charity or return them to your dry cleaner to be used again</i></p>			
<h2>Miscellaneous</h2>			
 <p>Vacuum cleaner bags</p>	 <p>Cigarette butts & ashes (put in bag and tie shut)</p>	 <p>CDs & CD cases</p>	 <p>Double bagged pet waste & litter</p>
<p>Do not place pet waste & cat litter in the yard waste container</p>			

So, what *does* go in? Get the curbside guide at:
<http://tiny.cc/corvallis-guide>



This guide was created by the Waste Prevention Action Team of the Corvallis Sustainability Coalition in summer 2020. Sponsored by Republic Services of Corvallis. For more guides and info about the Recycling Block Captain program, please visit <http://tiny.cc/wpatcapt>.