

# CAN FOOD WASTE GO IN MY YARD WASTE CART?



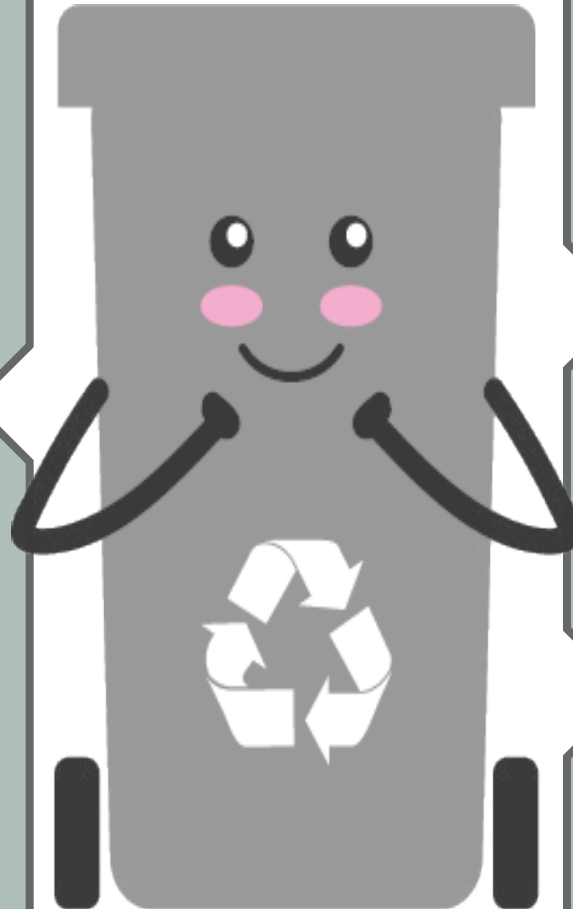
Test your Mixed Organics recycling knowledge!

**1** Which of these items can go in the Yard Waste cart? (Select all that apply)

- a. Unrinsed egg shells
- b. Vegetable scraps
- c. Fruit waste
- d. Paper towels
- e. Paper bags

**2** What else can go in the Yard Waste cart? (Only 3 are correct)

- a. Dairy waste
- b. Compostable serving ware (paper plates, compostable utensils)
- c. Meat and bones
- d. Paper coffee filters
- e. Plastic "to go" containers



**3** True or False: It's OK to put food and yard waste in compostable plastic bags before putting them into the Yard Waste cart.

**4** True or False: Shredded paper, facial tissue, and disposable diapers do NOT belong in the Yard Waste cart.

**5** Can I freeze my food scraps before placing them in the Yard Waste cart?

- a. Yes, that's an acceptable way to store food scraps.
- b. No, they must be thawed or at room temperature.

## BECOME A RECYCLING BLOCK CAPTAIN!

Help your neighbors Recycle Right,  
Landfill Less & Compost Everything Else!  
Distribute information in your area  
3x per year. We provide the handouts!



Guide created by the Waste Prevention Action Team of the Corvallis Sustainability Coalition, with sponsorship by Republic Services, the Corvallis Sustainability Coalition, and Salem Printing & Blueprint, Inc. For more info about the Recycling Block Captain program, visit [tiny.cc/wpatcapt](http://tiny.cc/wpatcapt).

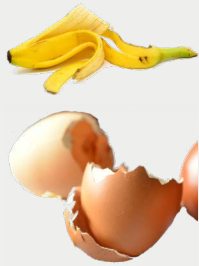




# ANSWERS

## A, B, C, D, E – All of them!

Please put ALL of your food waste into the Yard Waste cart, including egg shells and fruit and vegetable scraps. A small amount of paper that has food on it is OK – but not large quantities.



1

Did you know that Corvallis was the first city in Oregon to offer curbside pickup of food scraps for composting? In 2021 alone, Benton County turned 23.6 million pounds of food and yard waste into soil-enhancing compost!

## A, C, D

Dairy products, meat and bones, and paper coffee filters should all go in the Yard Waste cart. While these items would typically not go into your backyard compost container, they are all acceptable in the Yard Waste cart. From there, they'll go to Republic Services' Pacific Region Compost facility, where they'll be turned into high quality compost.



2

## FALSE!

Plastic bags, whether compostable or not, should NEVER go in the Yard Waste cart. Please take clean produce bags and soft plastic grocery bags – but NOT the ones labeled “compostable” – to local grocery stores that offer plastic bag recycling. If you need something to place at the bottom of your Yard Waste cart so food doesn't stick to it, you can use a small clean paper bag or some baking soda.



3

## TRUE!

Shredded paper, facial tissue, and disposable diapers belong in the trash. Placing any of these in your Yard Waste cart could contaminate the whole load. You CAN use a 'security roller' ink device to hide the confidential portions of a document, and then recycle it in the tan recycling cart.



4

## YES!

Freezing food waste until collection day is a great solution for people who don't want to store food waste in a counter-top compost pail.

5

*No Food Left Behind - Corvallis offers simple tools to help you save \$\$\$ and waste less food!*

*They include Smart Strategies like “Eat First!” signs, Freezer Inventory forms, counter-top compost pails, and their “A-Z Keep It Fresh” guide for proper fruit and veggie food storage.*

<https://nofoodleftbehindcorvallis.org/>



*Benton To Go is a new reusable takeout container program with participating local restaurants. The container is easy to identify in your fridge and makes it easier to use up (and not waste!) your leftovers.*

